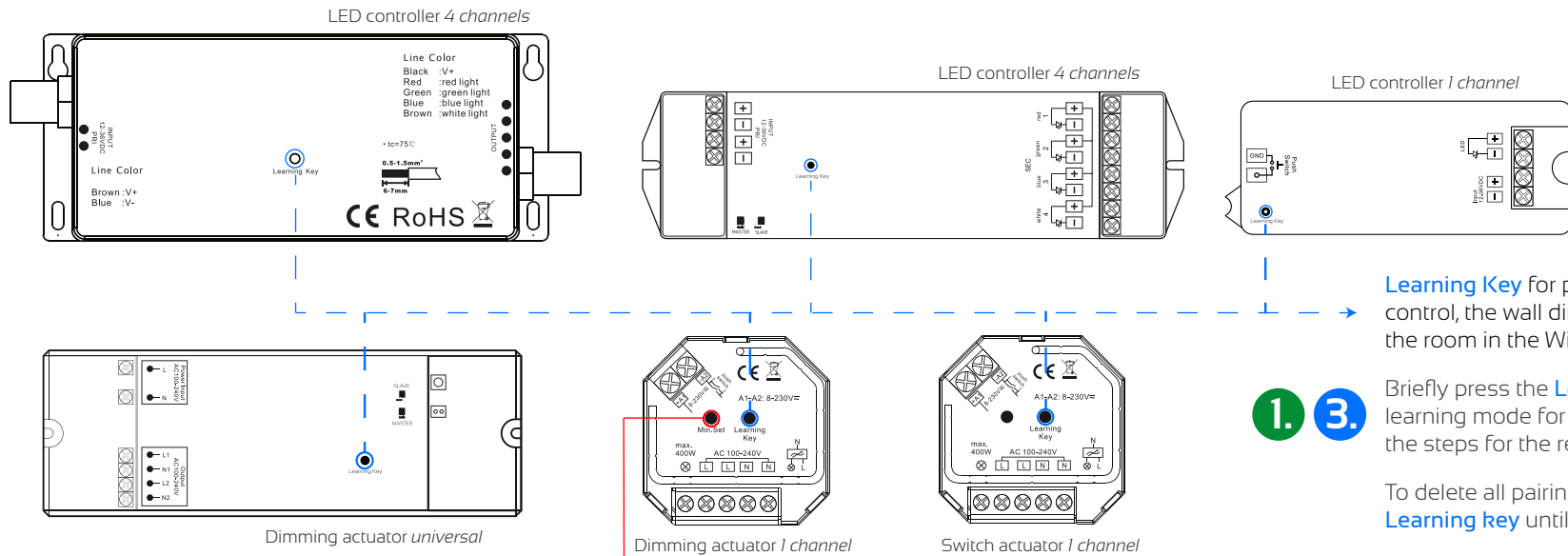


Instructions for pairing our RF products

A. Select your LED controller oder actuator



Green circle: Coupling process with wall dimmers and desk dimmers with one zone / one switch

Blue circle: Pairing process with hand-held remote controls and Touch wall dimmers with more than one zone

Learning Key for pairing the hand-held remote control, the wall dimmer, the desk dimmer and the room in the WiFi app.

- 1.** Briefly press the **Learning Key** to pair. The device is in learning mode for 15 seconds. During this time, please follow the steps for the respective remote controls.
- 3.**

To delete all pairings, press and hold the **Learning key** until the light flashes.

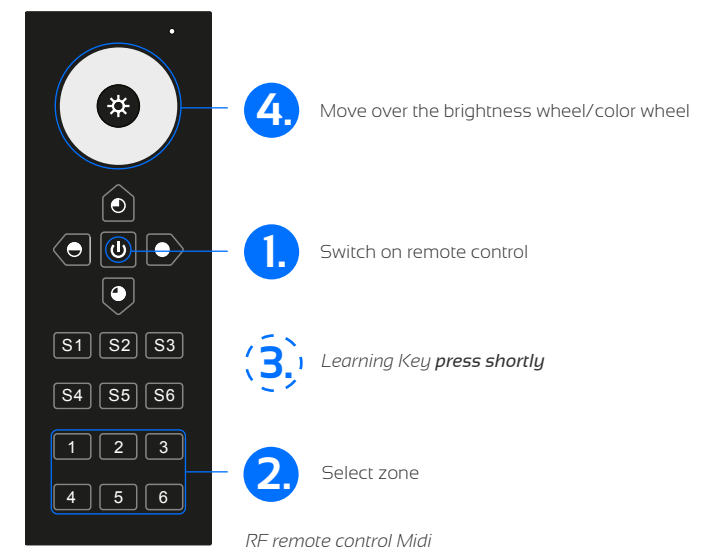
Minimum brightness

To set the minimum brightness (avoid flickering), set it with the remote control so that the LEDs do not flicker, then briefly press the **min. set** button on the dimming actuator. The connected LEDs flash briefly as confirmation.

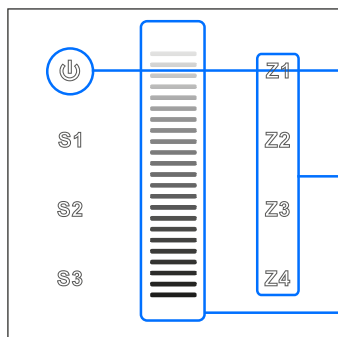
To delete the minimum brightness with the remote control, set the brightness to 100% and press the **min. set** button on the dimming actuator until the connected lamps flash to confirm.

B. Select your remote control

The remote control must remain switched on during the pairing process.

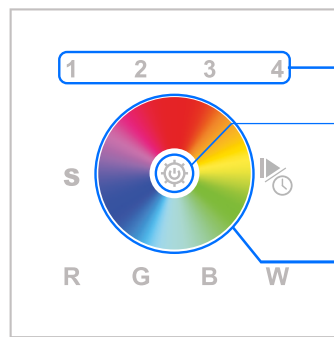


B2. Select your wall-/desk dimmer



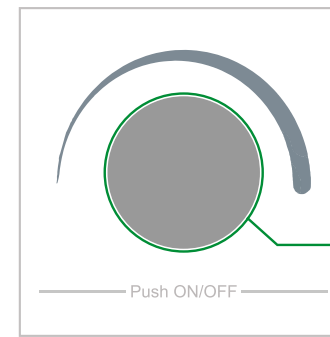
RF wall dimmer touch

1. Switch on wall dimmer
2. Select zone
3. Learning Key *press shortly*
4. Move over the brightness/color bar



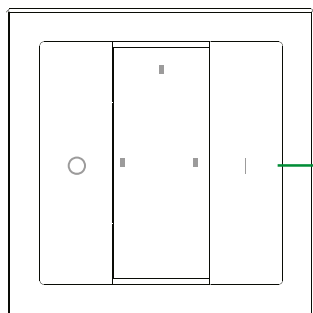
RF wall dimmer touch round

2. Select zone
1. Switch on wall dimmer
3. Learning Key *press shortly*
4. Move over the color wheel



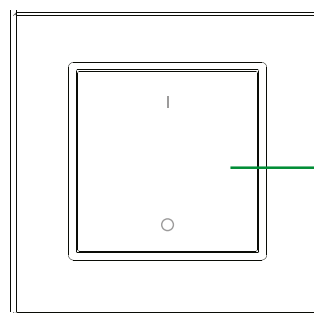
RF wall dimmer with knob

1. Learning Key *press shortly*
2. Switch on wall dimmer



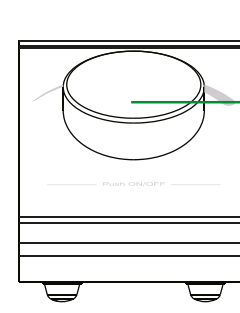
RF wall dimmer with switches

1. Learning Key *press shortly*
2. Switch on wall dimmer



RF wall dimmer with switches - plexiglas frame

1. Learning Key *press shortly*
2. Switch on wall dimmer



RF desk dimmer with rotary switch

1. Learning Key *press shortly*
2. Switch on desk dimmer

Pairing process was successful if the connected lamp flashes!

Warning

The operating instructions are available for download on our website. Please download them before installation and commissioning and read them carefully. Always observe the safety instructions.



Risk of electric shock. Installation and maintenance work may only be carried out when the power supply is switched off. Please secure the system against accidental restarting.



The high-voltage dimming actuators and the high-voltage switching actuator may only be installed and maintained by qualified personnel. In Germany, this must be carried out by a company in the electrical trade.



Only approved cables may be used for the connection. The rated current of the cable must be greater than the rated current of the controller / wall dimmer.



Declaration of conformity

We, iluminize GmbH, hereby declare that all products shown here and purchased by you comply with Directives 2014/53/EU (RED), 2014/30/EU (EMC), 2014/35/EU (LVD) and 2011/65/EU (RoHS). The full text of the EU Declaration of Conformity is available at the following internet addresses:

Actuators with 230V connection	Short link EU actuators
Wall dimmer with 230V connection	Wall dimmer with 230V connection
Wall dimmer with battery operation	Wall dimmer with battery operation
Remote controls	Remote controls
Desk dimmer	Desk dimmer

Our iluminize controllers and remote controls are compatible with each other. The color of the LEDs must match the remote control (e.g. white LEDs with remote control for white LEDs). Remote controls for CCT-white and RGBW LEDs cannot usually control white LEDs.

We CANNOT guarantee the compatibility of components purchased elsewhere.